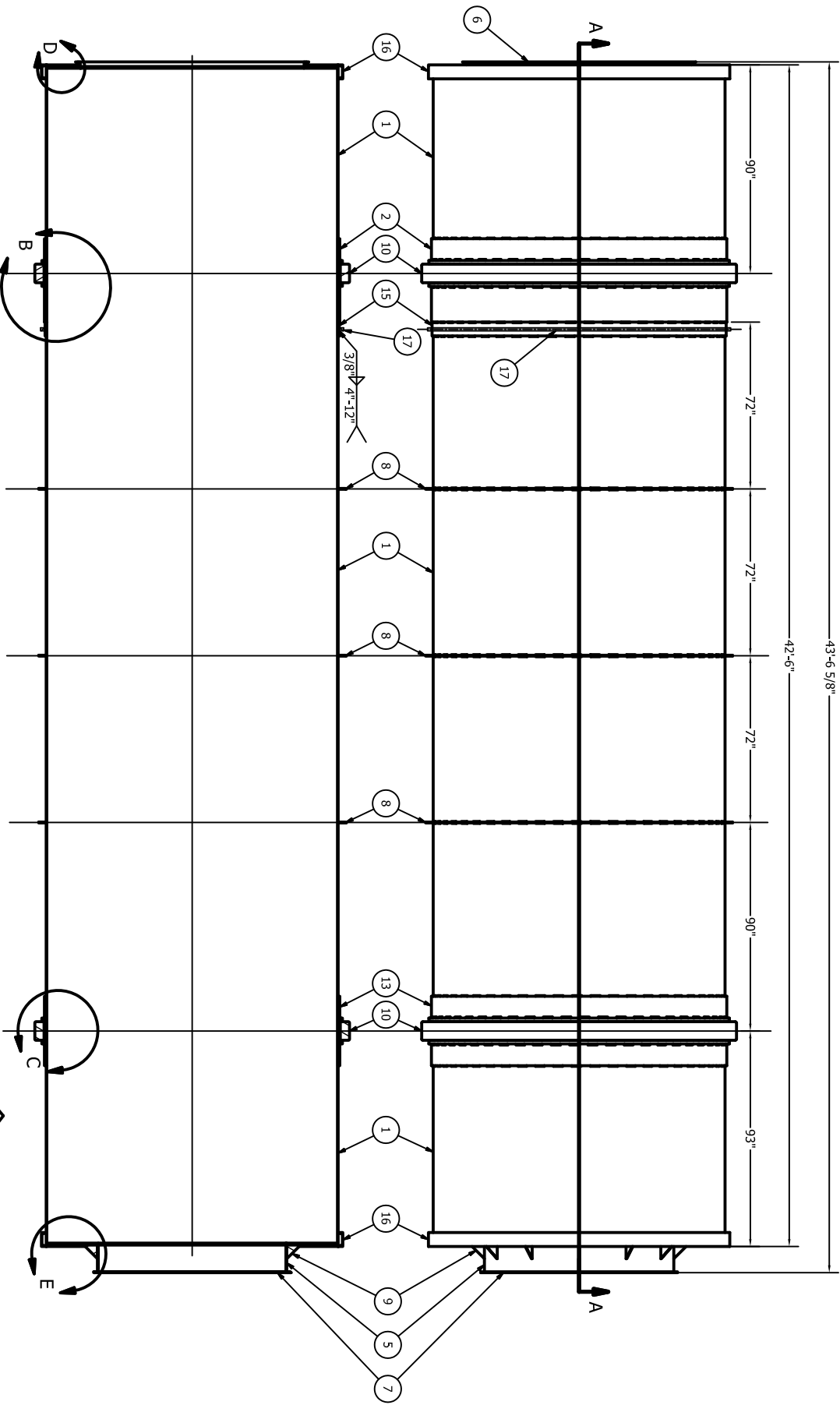
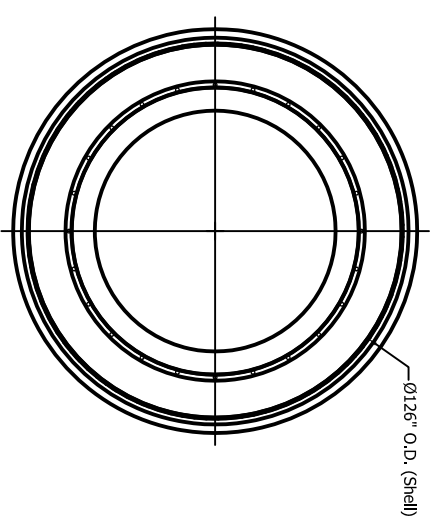
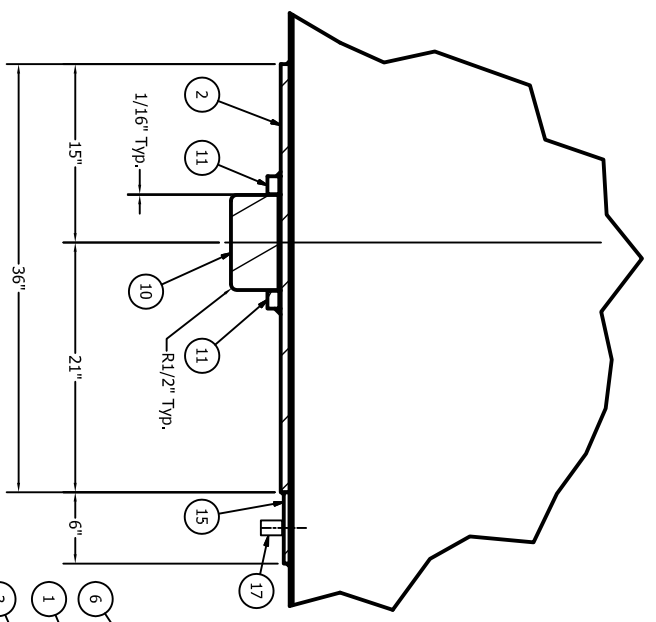


ITEM	QTY.	PART/DRAWING #	DESCRIPTION	MATERIAL	WEIGHT (lbs)
1	1		Outer Shell	Steel, Mild	14303
2	1		Inlet Track Base Plate	Steel, Mild	3053
3	1		Head Plate, Inlet End	Steel, Mild	1072
4	1		Head Plate, Discharge End	Steel, Mild	1532
5	1		Discharge Tube	Steel, Mild	316
6	1		Inlet Flange	Steel, Mild	80
7	1		Discharge Flange	Steel, Mild	55
8	3		Stiffening Ring	Steel, Mild	406
9	12		Gusset	ASTI 1045	23
10	2		Track	ASTI 1045	7503
11	4		Track Retaining Ring	Steel, Mild	689
13	1		Outlet Track Base Plate	Steel, Mild	2544
15	1		Sprocket Attachment Ring	Steel, Mild	339
16	2		Containment Ring	Steel, Mild	607
17	1		Sprocket	A-36	N/A

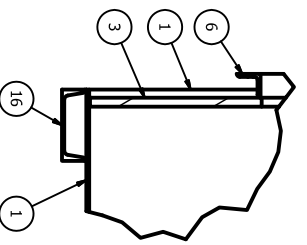
- NOTES:
- TOL. ± .015 ALL DIMENSIONS. MACHINE 250 RMS TO SIZES SHOWN.
 - (ITEM 10) 1/2" RADII ON OUTSIDE EDGES OF TRACK ONLY.
 - ASSEMBLE TRACKS (ITEM 10) TO BASE PLATES BY HEATING AND SHRINKING PER RUNNING SPECIFICATION DRAWING 4463. RADIAL INTERFERENCE: .035".
 - HEAT TO TEMPERATURE: 400 DEG. F
 - SHIM THICKNESS IS APPROXIMATELY .035". IMPORTANT: SEE RUNNING DRAWING 4463 FOR DETERMINATION OF ACTUAL THICKNESS.
 - WELD EACH TRACK STOP RING TO BASE PLATE. NO WELD ON SIDE ADJACENT TO TRACK.
 - (ITEM 6) STANDARD PUNCHED 96° ANGLE RING, 2 X 2 X 3/16" ANGLE, 96 3/16" I.D., 24 X 7/16" HOLES ON 49 3/16" B.C.
 - (ITEM 7) 24 X 1 1/16" HOLES ON 41 3/4" B.C.
 - APPLY 2 COATS OF GREY COAT PRIMER AND PAINT W/ GREY COLOR FINISH COAT(S) AS REQUIRED FOR OUTDOOR SERVICE.



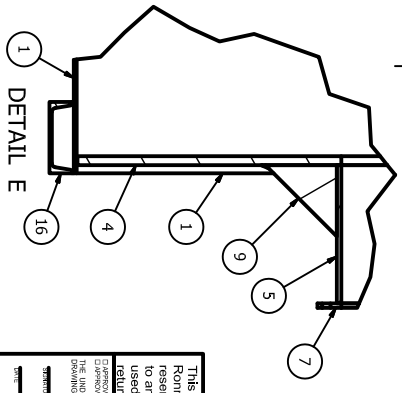
SECTION A-A
SCALE 1/32



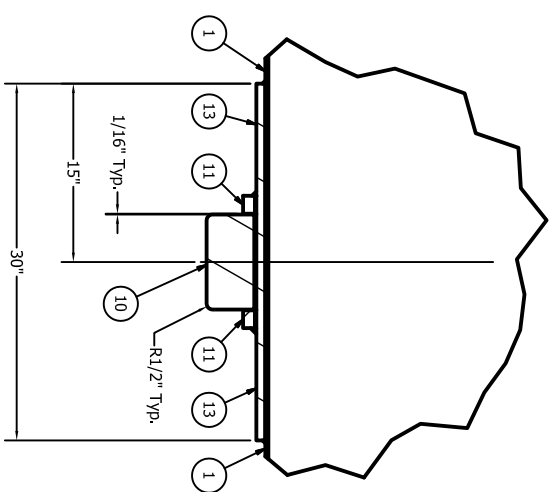
DETAIL B
SCALE 1/8



DETAIL D
SCALE 1/8



DETAIL E
SCALE 1/8



DETAIL C
SCALE 1/8

This drawing contains confidential proprietary information of Roming Engineering Co. and all rights are expressly reserved. The contents of this drawing may not be revealed to anyone nor copied in whole or part nor its design features used in other products without written consent. It must be returned when it is no longer needed on any business.

ROMING ENGINEERING COMPANY, INC.
OVERLAND PARK, KANSAS

Customer: Endres Processing - Upper Sandusky, Ohio

DATE: 12/18/2009

DESCRIPTION: 10-1/2" x 40" Cooling Drum Shell

SCALE: 3/8" = 1" D

REVISION NO.: EPU5085

DATE: 1 OF 1